

DEPARTMENT OF COMPUTER SCIENCE  
TORONTO METROPOLITAN UNIVERSITY  
USER GUIDE

\*\*\*If in the past, you logged in to Computer Science account, and changed your password, your password remains the same. If you forgot your password, please talk to Admins and they will reset to default password. \*\*\*

## FIRST TIME LOGGING IN

Your Computer Science **Username** is the **Short ID** found in my.ryerson.ca. Log into my.ryerson.ca > Click on the Profile Dropdown Menu on the right side of the page > Of the options, click on "Personal Account" > In "General", click the "Personal Information" Tab > Under "my.ryerson Short ID" is your Computer Science Username.

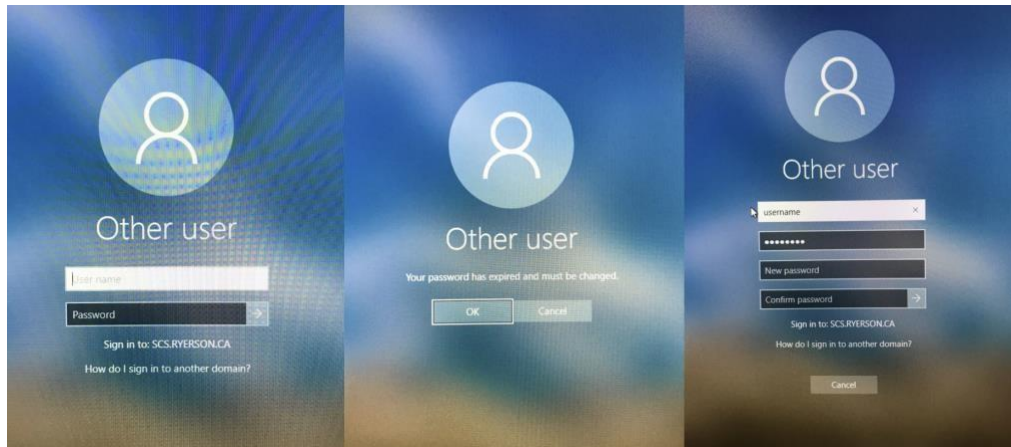
Initially when your account is first created, your password will be in the format: MMDDXXXX (where MM is your Birth-Month, DD is your Birthday, and **XXXX is the last four digits of your student ID number**).

While login for the first time, you will be asked to change your password. Your new password must be at least **8** characters long. The password must contain three different classes (Upper letters, Lower letters, Numbers, and Punctuation marks).

## LOGGING INTO WINDOWS

Windows 10 machines are located in labs (ENG201, ENG202, ENG203, ENG206) and they can only be accessed locally.

To begin, make sure the PC you are using is currently running Windows 10. If it is not, restart the PC and choose Windows from the boot menu. When Windows has finished loading you will be presented with a login prompt where you must type your Computer Science username and password.



1. Type your CS username and password (default password is MMDDXXXX, which is your Birth month, Birthday and last four digits of Student ID)
2. Press ok for changing the password
3. New Password must be at least 8 characters long and contain an upper-case, lower-case character and contain at least one number.

## LOGGING INTO LINUX

You can access **Linux Moon** from everywhere.

1. Open an SSH Client on your system

### WINDOWS 10/11

- Open **Command Prompt** or **Power Shell**



### LINUX/MAC OS

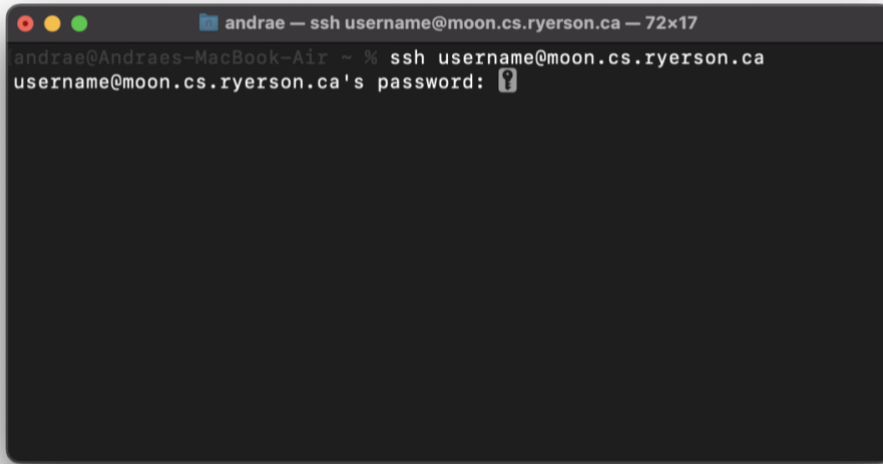
- Open **Terminal**



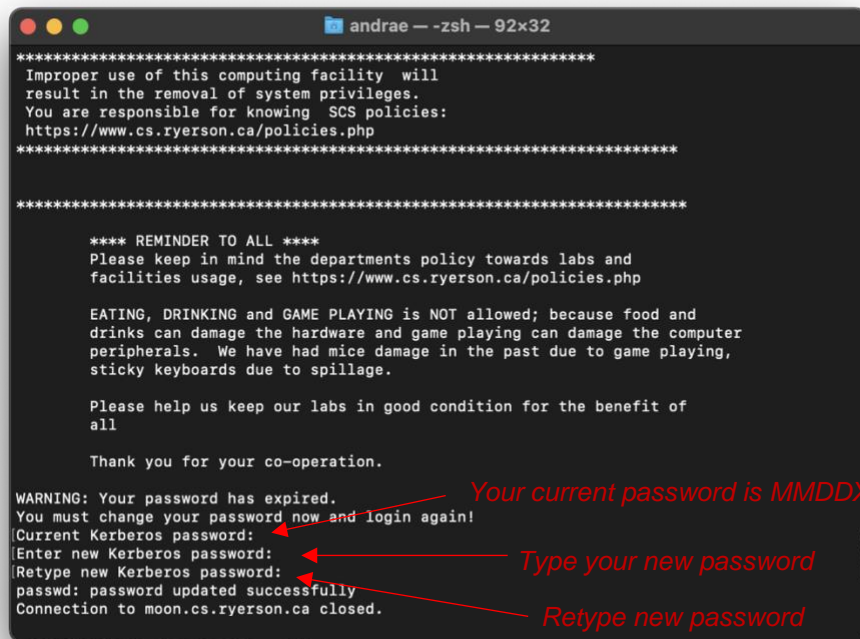
2. Type “ssh [username@moon.cs.ryerson.ca](mailto:username@moon.cs.ryerson.ca)” and press “Enter” - Your Username is the Short ID found in my.ryerson.ca.



3. Type your password. Your default password is MMDDXXXX, which is your birth month, birthday, and the last four digits of your Student ID. - Passwords will be hidden while you are typing.



4. Moon server will ask you to change your password if it is your **first time** or your password is **expired**.
  - Your current password is MMDDXXXX **or** your old expired password.
  - New password must be at least 8 characters long and includes at least one uppercase, lowercase, and number characters. It must be a completely new password, not one you have already chosen before. - Retype your new password again.



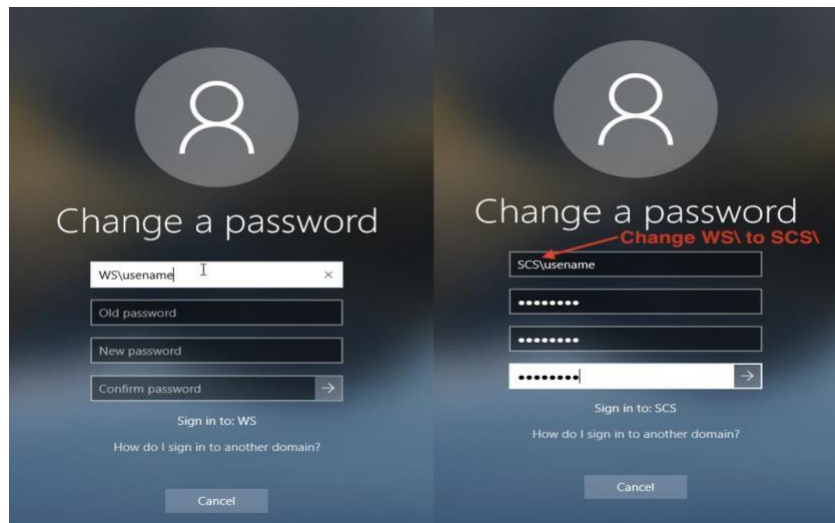
5. Your connection will be terminated automatically after you create a new password. Please try to connect again with the new password.

## CHANGING YOUR PASSWORD

Passwords in the Computer Science Department **will expire every six months.**

### On Windows 10:

Log on using Windows and hit Ctrl + Alt + Delete. Choose “Change Password”. Change **WS\username** to **SCS\username** then type your old and new password.



### On Linux:

Log in or ssh to any Linux servers, open a terminal and type “passwd”. Type your current and new password.

**NOTE:** Your new password must be at least **8** characters long. The password must contain three different classes (Uppercase letters, Lowercase letters, Numbers, and Punctuation marks). The new password must be different from previous passwords.

## IMPORTANT LINKS

For further references, please refer to the Computer Science website:

CS Home Page: <https://www.ryerson.ca/cs/>

**CS User Guide:** [https://www.cs.ryerson.ca/user\\_guide.php](https://www.cs.ryerson.ca/user_guide.php)

Policy Page: <https://www.cs.ryerson.ca/policies.php>

Webmail: <https://webmail.scs.ryerson.ca/>

Admin Offices:

ENG245

ENG246

\*\*\*\*System related problems: [request@cs.ryerson.ca](mailto:request@cs.ryerson.ca)\*\*\*\*